



ALUMINIUM SHAPED BY GUTMANN



# GUTMANN SLIMFLEX

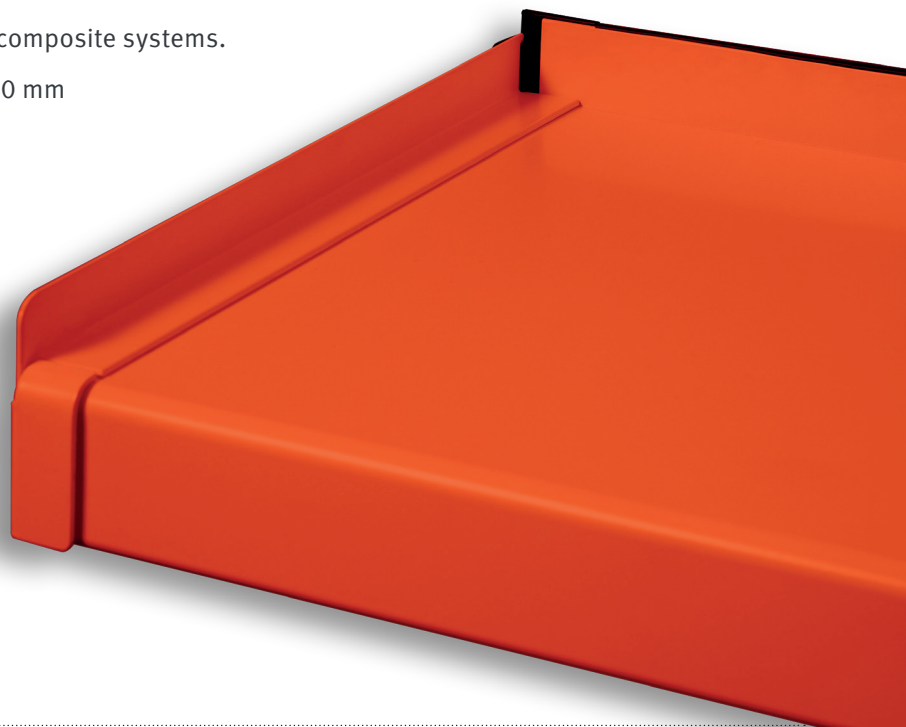
Aluminium Sliding Closure BF 4006 Z | BF 4004 Z

## A CLASS OF ITS OWN!

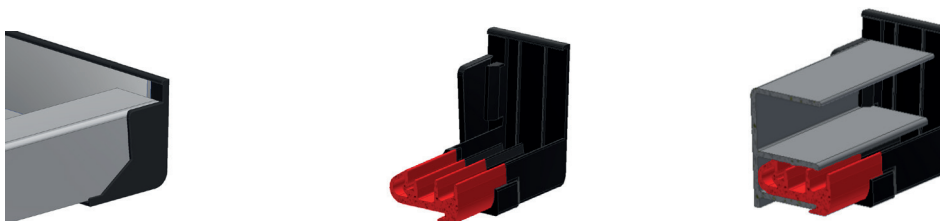
This is the updated version of the tried-and-tested GUTMANN aluminium sliding closure version BF. It is even easier to process, narrower and more delicate.

This innovative product further proves GUTMANN Bausysteme GmbH's expertise when it comes to exterior window sills. The attractive design of the aluminium window sill flashing is inspiring. Its reliability and cost-effectiveness are compelling. It is even easier to process, narrower and more delicate.

- › Attractive design through filigree shape.
- › Integrated expansion compensation (3 mm on each side).
- › Plaster edge width 22 mm.
- › Also available for clinker/concrete connection.
- › Cost effective processing: ONE PIECE.
- › Resistant to heavy rain (system tested).
- › Ideal for use in external thermal insulation composite systems.
- › Available with overhangs from 50 mm to 500 mm for GUTMANN window sill systems.
- › Selection of standard colors from stock, all RAL colors are available.



New fitting with considerably less build-up on the screw-on bar



Suitable for the new gasket piece the narrow gasket UD 400-1

